

TO BE A WORLD-CLASS ENTERPRISE OF HIGH-END
ENERGY AND CHEMICAL EQUIPMENT



JINGMEN HONGTU SPECIAL AIRCRAFT MANUFACTURING CO.,LTD.

Add: No.16 Yingchun Avenue,Duodao District,Jingmen City,Hubei Province,China

Website: <http://en.hkhongtu.com> <http://cimchonto.en.alibaba.com>

<http://cimchonto.en.made-in-china.com>

SALES HOTLINE
0086-724-6066121/6066122



TO PROVIDE HIGH-END ENERGY AND CHEMICAL EQUIPMENT
AND ONE-STOP SOLUTIONS AND BE THE PROMOTER OF
CLEAN ENERGY APPLICATION

Honto 宏图
CIMC ENRIC

荆门宏图特种飞行器制造有限公司

JINGMEN HONGTU SPECIAL AIRCRAFT MANUFACTURING CO.,LTD.



CONTENTS

CORE VALUES

INTEGRITY-BASED
HONEST, LOYAL & PRACTICAL

CUSTOMER FOREMOST
BETTER, QUICKER & MORE

EFFICIENCY DRIVEN
EFFICIENCY, EFFECTIVENESS & BENEFIT

INNOVATION UNLIMITED
BOLD IN THINKING, ACTION & COMMUNICATING

DEDICATION COMMITTED
DEDICATED, RESPONSIBLE & COLLABORATIVE

PERFECTION PURSUED
PROGRESSIVE, LEARNING & EXCEEDING



01 / 01

COMPANY PROFILE

02 / 02

COMPANY MILESTONES

03 / 04

INTERNATIONAL QUALIFICATIONS

05 / 06

ENTERPRISE ADVANTAGES

07 / 18

LPG AND PETROCHEMICAL STORAGE & TRANSPORTATION EQUIPMENT

19 / 22

LNG AND REFRIGERATED LIQUEFIED GAS STORAGE & TRANSPORTATION EQUIPMENT

23 / 34

LPG, PETROCHEMICAL AND NATURAL GAS EPC PROJECT

35 / 36

INTERNATIONAL BUSINESS MARKETING NETWORK AND SERVICES

37 / 38

OVERSEAS CUSTOMERS AND PARTNERS



COMPANY PROFILE

Jingmen Hongtu Special Aircraft Manufacturing Co., Ltd. (hereinafter called CIMC HONGTU) is a wholly owned enterprise of CIMC ENRIC Holding Co., Ltd.(CIMC ENRIC), a listed company in Hong Kong. It was founded in 1971, formerly known as Hongtu Aircraft Factory(HONGTU), affiliated to the Aviation Industry Corporation of China (the Third Ministry of Machine Building Industry). With a history of over 40 years of pressure vessel manufacturing and an investment of CNY 1.3 Billion in Jingmen City, CIMC HONGTU has become the largest production base of energy and chemical equipment in the central and western regions of China. It is mainly devoted to the manufacturing of high-end equipment for the energy and chemical industry.

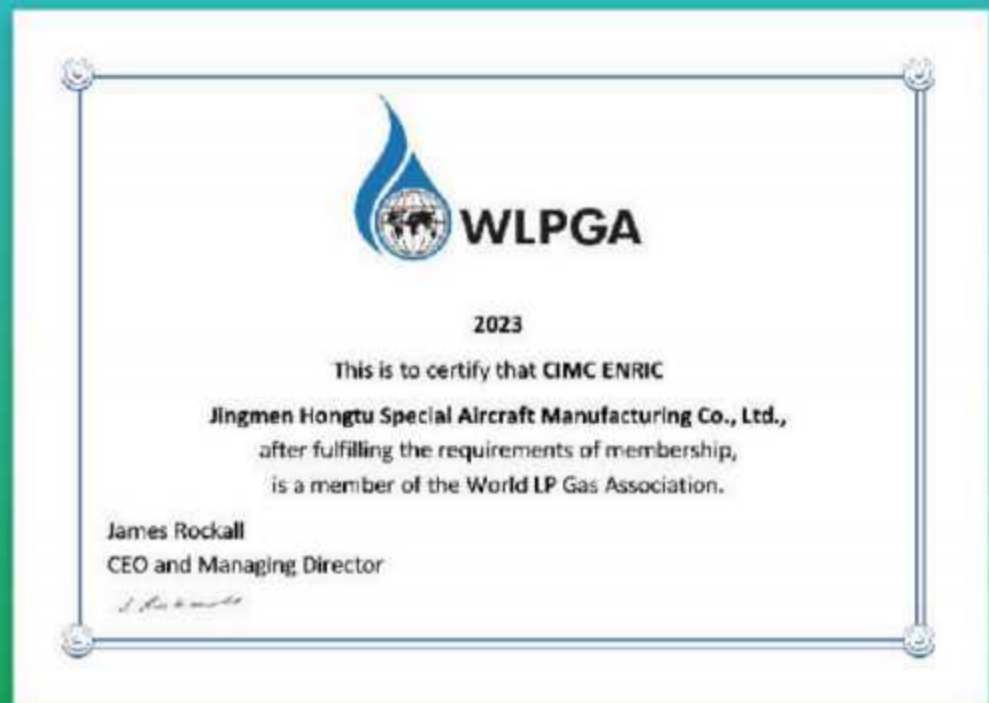
With the subject of scientific and technological innovation and the core of intelligent manufacturing and green manufacturing, focusing on manufacturing of high-end energy and chemical transportation and storage equipment. The main products are LPG road tankers, LNG cryogenic liquid road tankers, large scale spherical tanks, cryogenic flat-bottomed storage tanks, large scale special chemical vessels, marine "oil to gas" fuel tanks and supporting equipment for energy and chemical systems. The company can provide one-stop integrated solutions for customers such as the storage stations, peak-shaving stations, refilling stations of energy and chemical gas and natural gas.

The production and sales of LPG road tankers of CIMC HONGTU has ranked No. 1 for the last 40 consecutive years in China, and the spherical tank production and sales has ranked No. 1 for the last 6 consecutive years in domestic market. CIMC HONGTU's products have been exported to 50 plus countries in Europe, Middle East, North&South America, Southeast Asia, Northeast Asia, Mid-Asia and Africa.

COMPANY MILESTONES



INTERNATIONAL QUALIFICATIONS



ENTERPRISE ADVANTAGES



01 POWERFUL R&D CAPABILITY

Hongtu has 329 technical staff in Tankers & Vessels R&D Department, Cryogenic Vessel R&D Department, Engineering R&D Department, Production Technology Department, Welding Technology Department, Quality Technology Department and Quality Control Department.

The company has 92 valid patents (including 18 invention patents, 1 appearance patent).

02 STRONG PRODUCTION CAPACITY

The company has various manufacturing equipment over 2,300 sets.

The total area of the company is 130,000 m², of which, the total area of the workshop is 103,641 m². There are 6 manufacturing workshops, including LPG tanker and vessel manufacturing workshop, spherical shell prefabrication workshop, LNG and cryogenic liquefied gas tanker and vessel manufacturing workshop, household LPG storage tank manufacturing workshop, petrochemical equipment manufacturing workshop and chassis manufacturing workshop.

The company ranks No.1 in production capacity & efficiency of the LPG vessels in China.

The company ranks No.1 in working capacity & efficiency of the spherical shell prefabrication line in China, with annual capacity of 70000 tons.

The company owns the first intelligent production line for household LPG storage tanks in China, with annual capacity of 12000 units/shift.

03 SCIENTIFIC AND RIGOROUS QUALITY ASSURANCE SYSTEM

The whole process of product quality control from design to delivery needs to pass 115 quality control points, 192 quality control procedures, with 66 QC documents to support and to be followed.

The annual number of X-ray film is more than 500,000 pcs, and the quality file of each product is archived throughout its life cycle, and each weld can be traced back.

Hongtu owns a special quality control center, which obtains grade 3 certificate for national defense metrology and has inspection capability of length, hardness, pressure, temperature, metallographic, electromagnetic, chemical and mechanical, covering all the inspection of outsourced material and process tests.

04 FAST AND EFFICIENT AFTER-SALES SERVICES

The company has 30 plus professionals engaged in after-sales services, and it has its own customer service center, always dedicated to providing the best on-site after-sales service and online after-sales technical support.

With strong technique, manufacturing, testing and other capabilities, Hongtu is committed to providing excellent service in the whole product life cycle.

LPG AND PETROCHEMICAL STORAGE & TRANSPORTATION EQUIPMENT

LPG SEMI-TRAILER

HONGTU has 40-plus years of experience in design and fabrication of LPG semi-trailers. With European and American certificates of pressure vessels, HONGTU can supply various semi-trailers as per Chinese standard, international standards, and tailored design, etc. HONGTU has cooperated with the international reputed suppliers of valves, instruments and other accessories, such as REGO, FISHER, KITZ, JC, ROCHESTER, WIKA, CORKEN, BLACKMER, etc. in the long term so as to supply the optional brands of valves, pumps and flow meters etc. as per clients' requirements.



LPG SEMI-TRAILER



Technical specification

Design code: ASME BPVC VIII-1/VIII-2, EN 12493, GB/T 19905, JB 4732

Volume: 30m³~70m³

Materials: SA-516, SA-517, SA-612, P460, WH590E, Q370R, etc.

Tank type: Cylindrical tank, Eccentric cone tank, etc.

Vehicle type:

ASME codes pressure vessel material plus international brands of valves and safety accessories.

Chinese standard pressure vessel material plus Chinese brands of valves and safety accessories.

Chinese standard pressure vessel material plus international brands of valves and safety accessories.

Optional Intelligent/Advanced Configuration: Tire Pressure Monitoring, Automatic Tire Inflating, Intelligent Reversing Braking, Burglar Alarm, Blind Zone Radar Alarm, Security Monitoring, Intelligent Emergency Shut-off Valve, Remote Temperature /Pressure /Liquid Level and Location Transmitter, Gas Leakage Alarm, etc.



LPG SEMI-TRAILER WITH PUMP

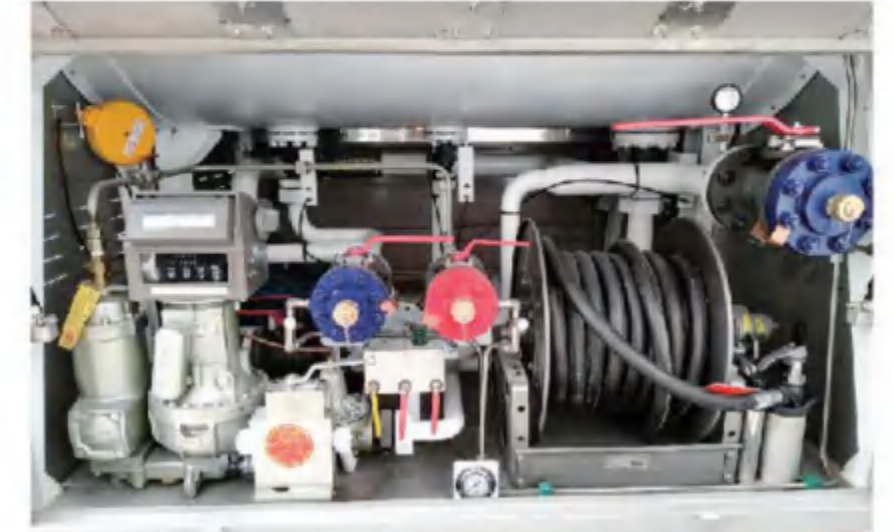
HONGTU is qualified to design and manufacture LPG semi-trailer with pumps and loading & unloading system on the side or at the rear of the tankers. The pump can be driven by PTO, hydraulic oil or electric motors. The valves and instruments used on the tankers are well-known international brands, catering to application requirements of Europe, America, Southeast Asia and other countries.

Technical specification

Design code: ASME BPVC VIII-1/VIII-2, EN 12493, GB/T 19905, JB 4732

Vessel capacity: 30m³~70m³

Material: SA-516, SA-517, SA-612, P460, WH590E, Q370R, etc.



LPG BOBTAIL TANKER

HONGTU is qualified to design and manufacture bobtail tankers with pumps and loading & unloading system on the side or at the rear of the tankers. The pump can be driven by PTO, hydraulic oil or electric motors. The valves and instruments used on the bobtail tankers are well-known international brands, catering to application requirements of Europe, America, Southeast Asia and other countries.

Technical specification

Design code: ASME BPVC VIII-1/VIII-2, EN 12493, GB/T 19905, JB 4732

Vessel capacity: 5m³~40m³

Material: SA-516, SA-517, SA-612, P460, Q420R, Q370R, etc.



LPG STORAGE TANK

HONGTU has the design and fabrication capability of stationary storage tanks, including above-ground storage tanks, underground storage tanks, horizontal storage tanks, and vertical storage tanks etc., which is customized according to the customers' requirement.

Technical Specification

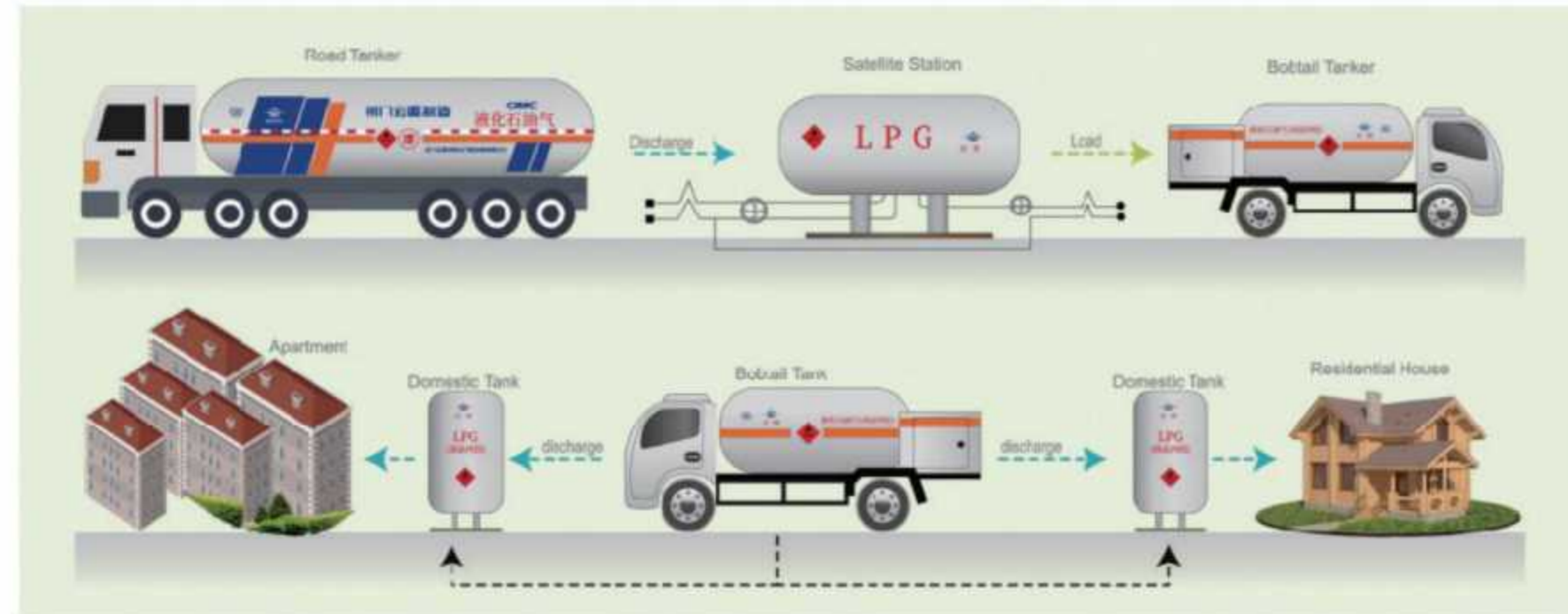
Design Code: ASME BPVC VIII-1/VIII-2, GB/T 150, JB 4732

Vessel Capacity: $\geq 5m^3$

Vessel Material: SA-516, SA-612, Q370R etc.



LPG HOUSEHOLD TANK



Design Code: GB/T 150, ASME BPVC VIII-1/VIII-2
Tank Capacity: 0.4m³~5m³

Tank Type: Vertical & Horizontal
Tank Material: Q345R, SA-516, SA-414



LPG FILLING SKID

Portable LPG skid for cylinder refilling or autogas refueling, with optional functions such as unloading, pressure transmitting, liquid level transmitting and temperature transmitting.

Tank Design Code: GB/T 150, ASME BPVC VIII-1/VIII-2

Tank Capacity: 5m³~100m³

Tank Material: Q345R, SA-516



PETROCHEMICAL PROCESS EQUIPMENT

HONGTU can provide ASME heat exchangers, towers, reaction vessels, non-ferrous metal containers, high-pressure fatigued equipment and various storage vessels for petrochemical process equipment.



PETROCHEMICAL ROAD TANKER



Design Code: GB, ASME

Fluid: anhydrous ammonia, propylene, iso-butane, butadiene, Anhydrous methylamine, oxirane, liquid chlorine, sulfur dioxide, Anhydrous hydrogen fluoride, trichlorosilane, methyl alcohol, etc.



LNG AND REFRIGERATED LIQUEFIED GAS STORAGE & TRANSPORTATION EQUIPMENT

LNG SEMI-TRAILER



Technical Specification

Design codes: GB/T 150 Pressure Vessels, NB/T47058-2017 Road Tankers for Refrigerated Liquefied Gas, ASME BPVC SEC VIII
Capacity: 20m³ ~ 58m³
Material: TAS30458/S30408/SA-240 304(Inner Tank)
 Q345R/SA-516(Outer Tank)



REFRIGERATED LIQUEFIED GAS STORAGE AND TRANSPORTATION EQUIPMENT



Design Code: GB, ASME

Fluid: LO₂, LN₂, LAr, LCO₂

Heat Insulation: High vacuum multi-layer winding, polyurethane foam

High quality Chinese brand or international brand valves and accessories, with optional functions of unloading system (Pump, Pressurizer/Vaporizer)

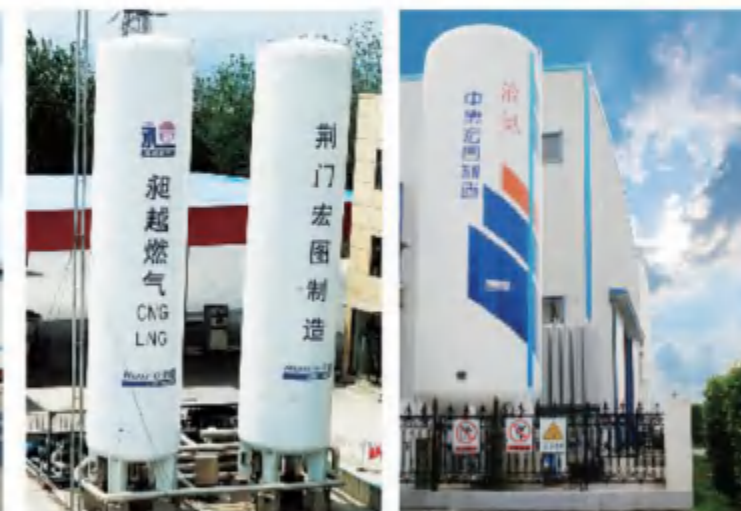
Available choices of running gear parts (axles, suspension, tyres, rims, etc.) from top suppliers.

Optional Intelligent/Advanced Configuration: Tire Pressure Monitoring, Automatic Tire Inflating, Intelligent Reversing Braking, Burglar Alarm, Blind Zone Radar Alarm, Security Monitoring, Intelligent Emergency Shut-off Valve, Remote Temperature / Pressure / Liquid Level / Location Transmitter, Gas Leakage Alarm, etc.

LNG AND REFRIGERATED LIQUEFIED GAS STORAGE TANK



Design codes: GB/T 150, GB/T18442, ASME BPVC VIII-1
Capacity: 5~200m³
Working Pressure: 0.8 ~ 1.2MPa
Type: Vertical or Horizontal
Fluid: LNG, LO₂, LN₂, LAr, LCO₂
Material: S30408, 16MnDR(Inner Tank)
 Q345R (Outer Tank)



LNG SHIP-BORNE FUEL TANKS



LPG, PETROCHEMICAL AND NATURAL GAS EPC PROJECT

LPG SPHERICAL TANK

Technical Specification

Design Code: ASME BPVC VIII-1/VIII-2, GB/T 12337, JB 4732

Vessel Capacity: 200m³~10000m³ liquefied gas spherical tank, 200m³ ~20000m³ gas spherical tank

Vessel Material: SA-516, SA-537 CL1, SA-537 CL2, Q370R etc.



Bangladesh 2x4000m³ Spherical Tanks



Bangladesh 3x4250m³ Spherical Tanks



Thailand 4x2000m³ Spherical Tanks



Kyrgyzstan 4x1000m³ Spherical Tanks



Cambodia 6000m³ Spherical Tank



Ghana 2x6000m³ Spherical Tanks



Maldives 3000m³ Spherical Tank



Nigeria 2x5000m³ Spherical Tanks



Nigeria 2x6000m³ Spherical Tank



Nigeria 4x10000m³ Spherical Tanks

LPG MOUNDED TANK

HONGTU has the design and fabrication capability of large size mounded tanks without saddles and medium & small size mounded tanks with saddles.

Technical Specification

Design Code: ASME BPVC VIII-1/VIII-2, EEMUA 190
Vessel Capacity: $\geq 5\text{m}^3$
Vessel Material: SA-516, SA-537 CL1, SA-537 CL2, P355N etc.



LPG RECEIVING TERMINAL

Based on collectivized operation and business synergy pattern and its own equipment manufacturing advantages, HONGTU is committed to providing global customers with integrated LPG engineering solutions, engineering services giving priority to engineering design and EPC services, and providing integrated services of system design, key equipment manufacturing, onsite installation and commissioning, personnel training and operation technical support.



LNG AND REFRIGERATED LIQUEFIED GAS TANK



CRYOGENIC STORAGE TANK

With the characteristics of light weight, low evaporation rate and reliable quality, HONTO cryogenic storage tank is the cost-effective choice for customers. HONGTU can provide single containment tanks, bimetal full containment tanks, cluster tanks, industrial gas storage tanks. Meanwhile, HONGTU has the ability to provide EPC solutions for LNG peak-shaving stations, LNG storage station, LNG gasification stations and industrial gas storage station, etc.

Design code: API 620, GB/T26978
Capacity: 500~50000m³
Material: Inner Tank. S30408/SA-240 304
 Outer Tank. S30408/SA-240 304



SINGLE CONTAINMENT TANK

The single containment tank is a double-walled tank which consists of an inner tank and an outer tank. Inner tank is used for storing cryogenic liquid. The space between the inner and outer tanks is filled with insulating material and sealed by nitrogen. The outer tank, which cannot store the liquid, is made of low alloy steel or carbon steel. The single containment tank requires an external dike. It has the advantages of mature technology and lowest initial investment.

Design code: API 620, GB/T26978
Capacity: 500~30000m³
Material: Inner Tank. ASTM A240/S30408
 Outer Tank. ASTM A516/Q345R/16MnDR



BIMETAL FULL CONTAINMENT TANK

The bimetal full containment tank consists of an inner tank and an outer tank. Inner tank is used for storing cryogenic liquid. Outer tank is used for storing the boil-off gas under normal conditions, and can store the cryogenic liquid in case of leakage. The outer tank is made of stainless steel. It has the advantages of short construction period and low cost when compared with reinforced concrete full containment tank.

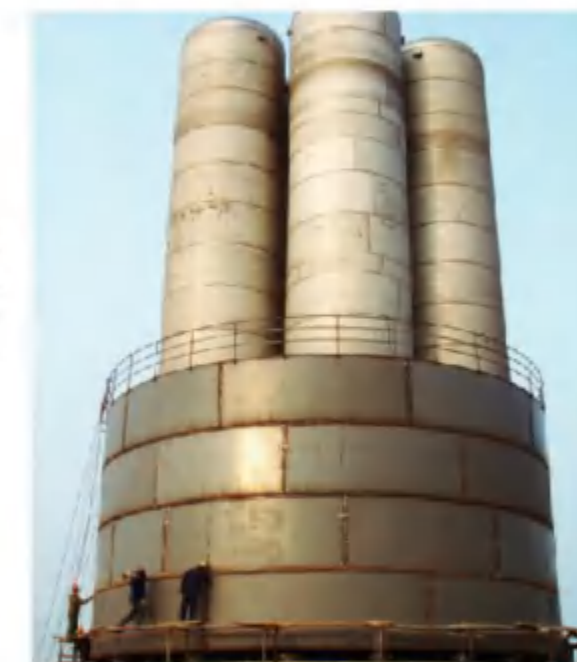
Design code: API 620, GB/T26978
Capacity: 5000~50000m³
Material: Inner Tank. S30408 /ASTM A240
 Outer Tank. S30408/ASTM A240



CLUSTER TANK

The cluster tank is used for storing large-capacity pressurized cryogenic liquid. Several inner tanks filled with liquid are placed in an insulated outer tank in a certain arrangement, and the space between the inner tanks and the outer tank is insulated by powder accumulation. It has the advantages of storing pressure liquid, discharging without pump and saving operating cost.

Design codes: ASME BPVC VIII-1; GB/T 150
Capacity: Total Capacity 1000-2500m³
Inner tank capacity: 200m³ or 250m³
Material: Inner tank : 30408/SA-240 304
 Outer tank : ASME SA-516/Q345R/16MnDR



PIPELINE EPC PROJECT



LPG STORAGE AND DISTRIBUTION STATION



LPG BOTTLING STATION



LPG AUTO-GAS STATION



LNG GASIFICATION STATION



LNG/CNG/L-CNG FILLING STATION



LPG/LNG POWER GENERATING PLANT



INTERNATIONAL BUSINESS MARKETING NETWORK AND SERVICES

- More Than 500 Clients and Customers
- 50+ Countries and Regions Overseas Market
- 60% Domestic LPG Semi-trailer Market Share
- Top 1 LPG Semi-trailer Manufacturer and Exporter in China
- Top 1 Spherical Tank Manufacturer and Exporter in China
- The First-class Cryogenic Storage and Transportation Equipment Manufacturer in China
- The Only Full LPG Industry Chain Solution Provider in China
- The Whole Product Life Cycle Services Provider.....

■ CHINA'S DOMESTIC MARKET ■ OVERSEAS MARKET



OVERSEAS CUSTOMERS

PARTNERS

